

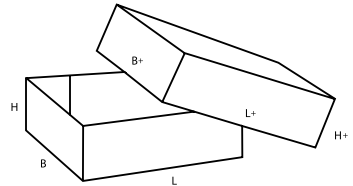
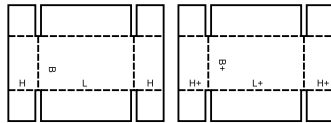
0300

▲ **Pudła teleskopowe** składają się z więcej niż jednej części i charakteryzuje je istnienie wieka i/lub spodu, które zachodzą teleskopowo na siebie.

▲ **Telescope-type boxes** consist of more than one piece and are characterised by a lid and/or bottom telescoping over the body of the box.

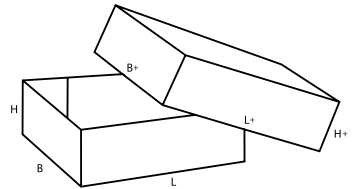
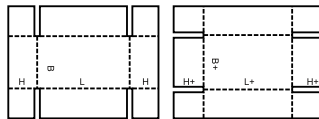
0300

M/A



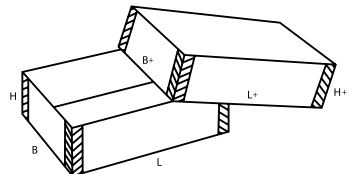
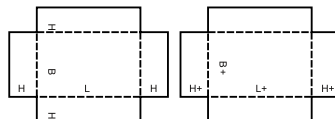
0301

M/A



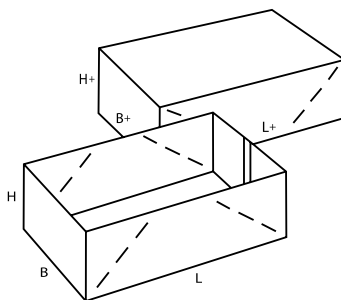
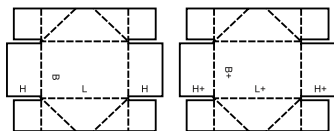
0302

M



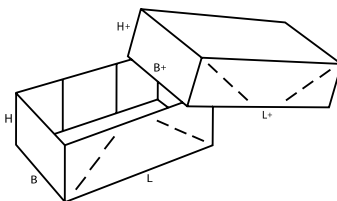
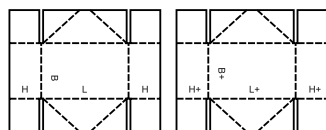
0303

M



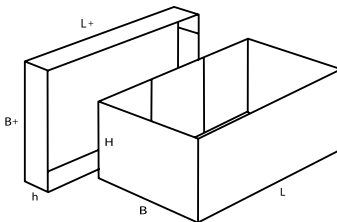
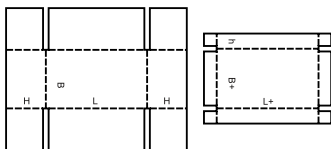
0304

M



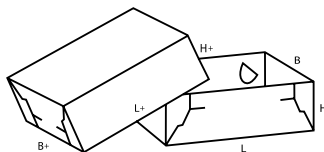
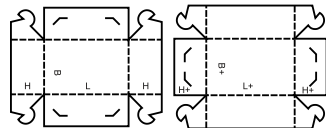
0306

M/A

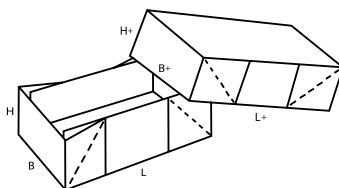
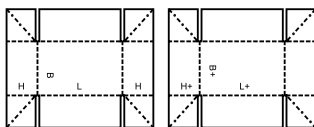


0307

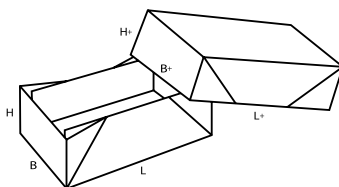
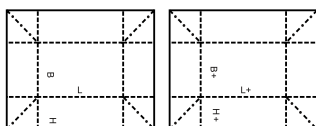
M



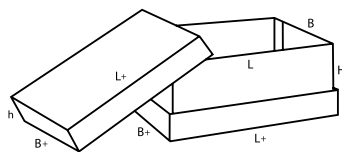
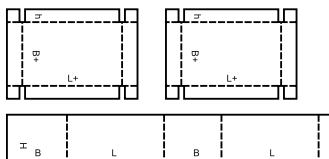
0308



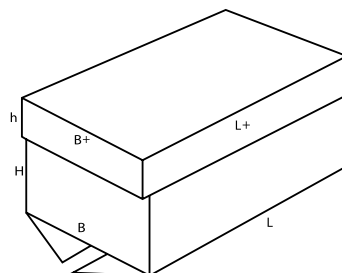
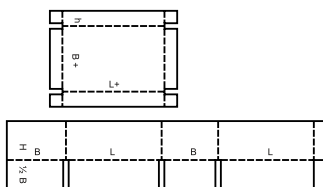
0309

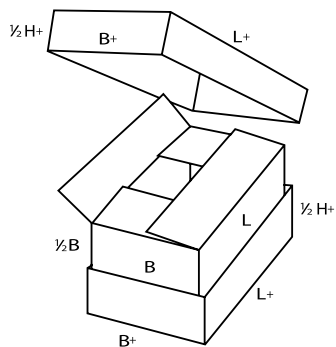
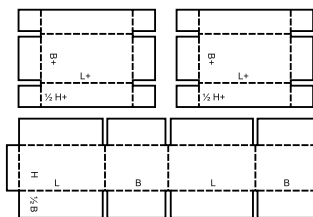
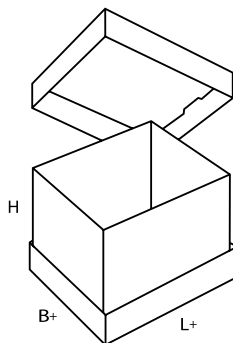
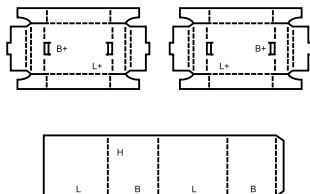
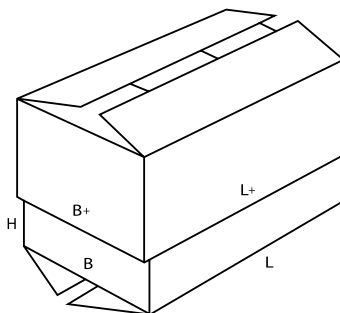
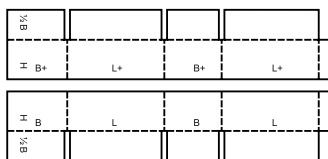
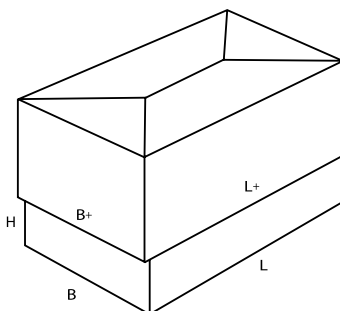
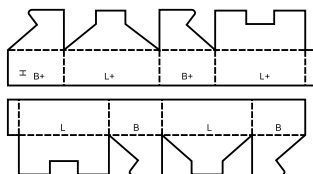


0310

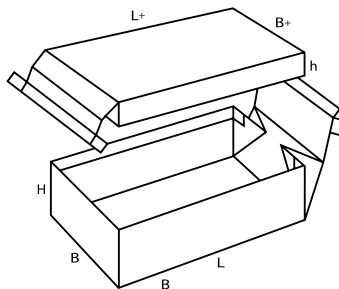
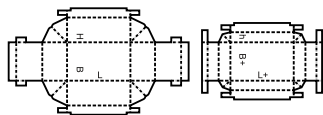


0312

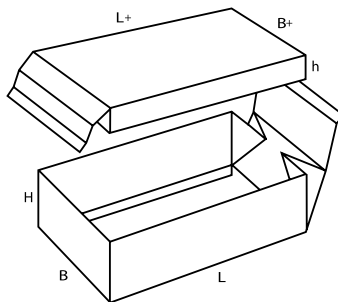
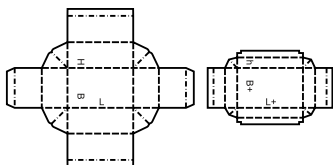


0313**M/A****0314****M****0320****M/A****0321****M**

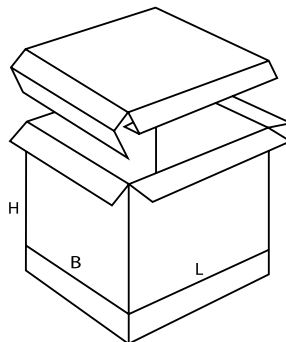
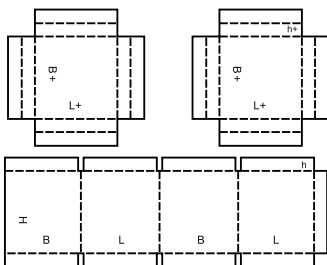
0322



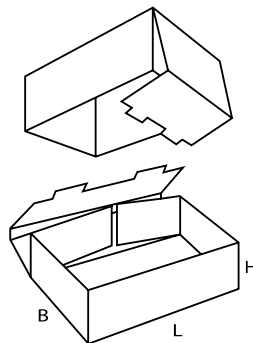
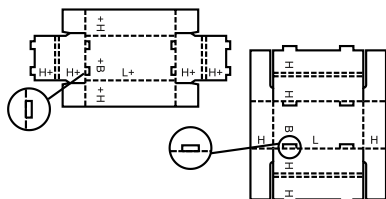
0323



0325

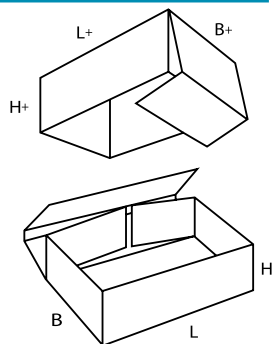
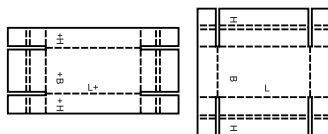


0330



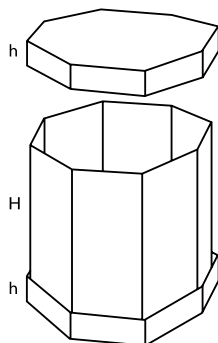
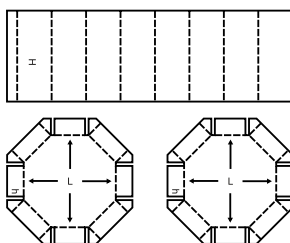
0331

M/A



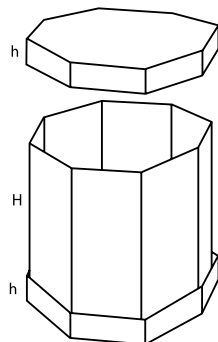
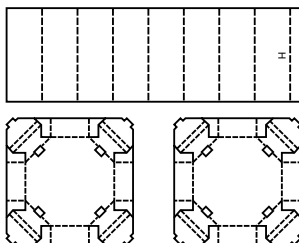
0350

M



0351

M/A



0352

M/A

